



# ASPIRE MAX ASPIRATION SYSTEM™

**CONTROL**  
MEDICAL TECHNOLOGY

Indication for Use: The ASPIRE MAX Aspiration System™, MAX Aspiration Catheters™, and ASPIRE Aspirator™ are indicated for the removal of fresh, soft emboli and thrombi from vessels in the peripheral vasculature. The ASPIRE Aspirator™ is also indicated to be used as a piston syringe to aspirate from the body.

**CONTINUOUS, SPOT & PULSED ASPIRATION**

Aspiration needs vary based on the size, location, and age of thrombus. Certain procedures benefit from continuous high-aspiration force. Other procedures only need a quick spot, or touch-up, aspiration. Yet in other situations, pulsed aspiration to rapidly cycle between full and no power is required.

Basic syringes lack this versatility. Syringes also require repeated attachment, filling, detachment, drainage, and re-attachment to catheters. Slow and messy.

The ASPIRE Aspirator delivers new control during aspiration. Users instantly start, stop, increase, decrease, maintain, and pulse aspiration force.

*It is an **aspiration gas pedal** that allows clinicians to decide how much, and how fast, aspiration is applied. Aspiration can be instantly changed based on what clinicians **see** and **feel** during the procedure.*

Squeezing the handles increases aspiration and releasing handles stops aspiration. A one-way valve on the plunger purges the barrel to maintain aspiration force. A one-way valve on the barrel prevents re-injection of the aspirant. The dual valves and a drain bag also create a *closed fluid system* to eliminate repeated syringe-catheter detachments and drainage.



**ASPIRE ASPIRATOR™**

**MAX ASPIRATION CATHETER™  
LARGE-LUMEN OVER-THE-WIRE (OTW)  
ASPIRATION CATHETERS**

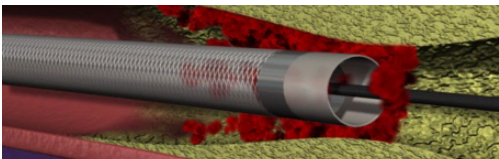


**IMPROVED LARGE-LUMEN CATHETERS**

First-generation basic aspiration catheters feature small aspiration lumens and are prone to kinking and clogging. Numerous clinicians report that angled tip catheters can adhere to healthy intima during aspiration. Many question if angled tip catheters hinder performance.

*Some users are dissatisfied with current aspiration catheter technologies. The ASPIRE MAX Aspiration System™ is a complete system that solves numerous aspiration and catheter issues.*

MAX Aspiration Catheter technology includes large round lumens, continuous wire braided shafts, and large integrated distal radiopaque markers. The ASPIRE Aspirator and MAX Aspiration Catheter technology combine to offer best-in-class performance and versatility.



ASPIRATION WITH OR WITHOUT GUIDEWIRE IN PLACE\*

Product Code	Name	Outer Diameter and Crossing Profile	Inner Diameter	Sheath Compatibility	Working Length
A5-055	ASPIRE MAX 5 Aspiration Catheter System** 55cm	5F (0.066")	4.1F (0.054")	5F	55cm
A5-135	ASPIRE MAX 5 Aspiration Catheter System** 135cm	5F (0.066")	4.1F (0.054")	5F	135cm
A6-055	ASPIRE MAX 6 Aspiration Catheter System** 55cm	5.9F (0.076")	4.9F (0.064")	6F	55cm
A6-135	ASPIRE MAX 6 Aspiration Catheter System** 135cm	5.9F (0.076")	4.9F (0.064")	6F	135cm
ASP-30	ASPIRE ASPIRATOR 30ml Only				

\* Test actuate ASPIRE handles before use. Attach required drain bag after test. Do not advance any aspiration catheter forward without a guidewire in place.  
\*\*System includes ASPIRE Aspirator, MAX Aspiration Catheter, Drain Bag, and Connection Tube. Requires a Y-Adapter. Reference: 5F = 0.066" and 6F = 0.079"



Control Medical Technology  
1920 East Hallandale Beach Blvd., Suite 905  
Hallandale, Florida 33009 USA  
www.ASPIRATIONMEDICAL.com  
(954) 534-9345 Office  
(954) 457-2448 Fax

Distributed By:



11733 66th St N Suite 113  
Largo, FL 334773  
888.548.4462  
FAX: 888.548.1462  
email: info@I-MA.com  
website: www.I-MA.com