

# Innovations for Peripheral Nerve Block Anesthesia...



## MiniSim

Interactive Ultrasound Guidance  
Simulators

## eZono™ 3000

Portable, Regional Anesthesia  
Focused Ultrasound System

## Peripheral Nerve Block Needles, Catheters and Stimulators

A full line of traditional and new,  
innovative PNB needles and  
catheters

*From training to clinical practice, an all-encompassing product line for  
peripheral nerve location using*

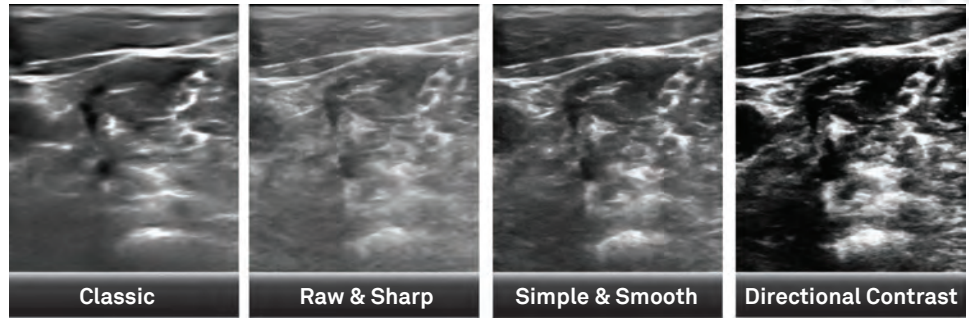
*...landmark identification*

*...nerve stimulation*

*...ultrasound visualization*

# eZono™ 3000

The eZono™ 3000 is a robust, portable, very easy to use ultrasound system designed specifically for anesthesia. It incorporates many special features suggested by practicing anesthesiologists, including four user selectable image styles.



## CUE CARDS

Unique on board Cue Card education software accelerates the learning curve and brings a high level of competence to peripheral nerve block anesthesia training.

eZono Cue Cards guide the user through each block with reference ultrasound images, videos and anatomical illustrations.

### Standard

- Regional Anesthesia: Interscalene, supraclavicular, axillary, intercostal, femoral, proximal sciatic, distal sciatic
- Vascular Access: Internal jugular, axillary, femoral

### Available for download

- Regional Anesthesia: Epidural, Spinal tap, Rescue Blocks
- Emergency: FAST, FEEL
- MiniSim: All types
- Ultrasound Basics: B-mode scanning, Color Doppler, Needle Placement

### Develop your own

- Working with Life-Tech you can modify existing Cue Cards or develop your own (Contact your sales representative for more details)

## eZono™ 3000 Specifications

### System

- Weight: 4.4kg
- Dimensions: 32.4 cm x 28.2 cm x 9.3 cm
- 26.4 cm (10.4") diagonal LCD touch screen with
- 24-bit and 60 million colors
- Digital broadband architecture
- 4 GB internal memory
- 2x USB 2.0 ports, 1 Express Card port, built-in microphone

### Software

- Proprietary operating system
- Updates via USB stick
- Less than 20 seconds boot time, less than 6 seconds back from stand-by
- Icon-based graphical user interface via touch screen

### Probes

- Linear and convex probes available

### Multi-media patient database

- Internal storage of up to 30,000 images or 30 minutes of video
- Image transfer via USB stick

### Imaging modes

- B-Mode
- Color Doppler
- Selection of image composition including Directional Control and image style
- Available Languages: English, French, German, Italian, Polish, Portuguese, Spanish, Turkish

### Clinical Pre-sets

- Imaging pre-set parameters for all Cue Card supported procedures
- Save up to 8 additional, personal favorites

### Measurements

- Distance
- Area

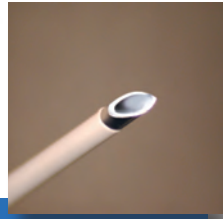
### Power

- 100-240 VAC, 50-60Hz power supply
- Rechargeable Li-Ion battery
- Runs up to 2 hours on battery while scanning

# Single Shot Needles

## ProBloc® II

- Block Bevel safety tip
- Stimulating or non-stimulating with the same needle
- Echo-friendly



- Available in 2 styles
- Laser tipped for precise placement
- Calibrated depth markings
- Sleeve insulated for greater tip exposure



HN1 Style - Needle Only



HN2 Style - Needle with attached injection tube



HN3 Style - Needle with integrated stimulating cable and attached injection tube



### Model Selection

Product	Style		Size		Attachments	
	Single Injection	Block Bevel	Gauge (OD)	Usable Length (mm / inches)	Stimulating Cable Attached	Infusion Set
<b>ProBloc II</b>						
HN1-40	X	X	22	30/1.2		
HN1-80	X	X	22	70/2.75		
HN1-100	X	X	22	90/3.5		
HN2-40	X	X	22	30/1.2		X
HN2-80	X	X	22	70/2.75		X
HN2-100	X	X	22	90/3.5		X
HN3S-40	X	X	22	30/1.2	X	X
HN3S-80	X	X	22	70/2.75	X	X
HN3S-100	X	X	22	90/3.5	X	X
HN3S-120	X	X	20	110/4.7	X	X
HN3S-150	X	X	20	140/5.5	X	X
PB22050GC	X	X	22	50/2	X	X
PB22080GC	X	X	22	80/3.15	X	X
PB20100GC	X	X	20	100/4	X	X
PB20120GC	X	X	20	120/4.72	X	X
PB20150GC	X	X	20	150/6	X	X
<b>EchoBright</b>						
EB22050G	X	X	22	50/2		X
EB20100G	X	X	20	100/4		X
EB20150G	X	X	20	150/6		X
EB22050GC	X	X	22	50/2	X	X
EB20100GC	X	X	20	100/4	X	X
EB20150GC	X	X	20	150/6	X	X
<b>StimPro</b>						
SP22050GC	X	X	22	50/2	X	X
SP20100GC	X	X	20	100/4	X	X

## StimPro™ - ProBloc® II

*Adding the benefits of fingertip control to peripheral nerve block anesthesia...*

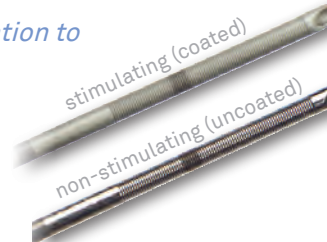
- Ergonomic hub-controlled stimulus output
- Block Bevel safety tip
- Calibrated graduation marks
- Easy connection to the Tracer® III or EZStim® II stimulators via CSB-2 interface



## EchoBright™

*Adding the benefits of ultrasound visualization to peripheral nerve block anesthesia...*

- 360° echogenic pattern
- Block Bevel safety tip
- Stimulating and non-stimulating models





# Continuous Nerve Blocks

Life-Tech continuous block sets include accessory devices designed to optimize ease-of-use, setup and patient comfort, such as the Catheter thread-assist guide and the Grip-Lok® Catheter Securement System



## ProLong® Needle and catheter set

- Available with Block Bevel or Tuohy tip needle
- Closed tip, 3-port non-stimulating catheter
- Catheter thread-assist guide reduces procedure duration

## ContiStim® Stimulating needle and catheter set

- Available with Block Bevel or Tuohy Tip needle
- Ball tip, 3-port stimulating catheter
- Includes the patented Stingray® catheter connector that provides a tactile “click” when closed securely on the catheter and has a flat profile to enhance patient comfort

### Needle set



### Needle set

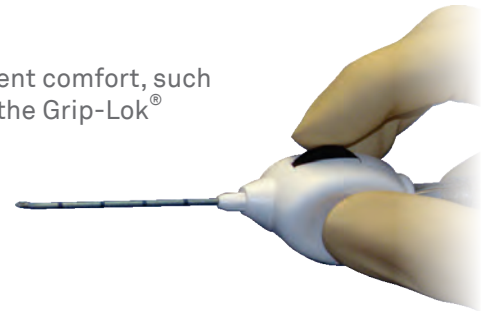


*StimPro continuous nerve block sets add the components needed for continuous infusion blocks to the convenience of the StimPro needle set...*

- Models with stimulating or non-stimulating catheters
- Include accessory devices designed to optimize ease-of-use, setup and patient comfort, such as the Catheter thread-assist guide, Tuohy-borst or Stingray® connector and the Grip-Lok® Catheter Securement System

## StimPro™ - ProLong®

*Combines a StimPro needle with the ProLong Catheter Set*



## StimPro™ - ContiStim®

*Combines a StimPro needle with the ContiStim Catheter Set*

## EchoLong™

*EchoLong sets provide the components needed for placement of regional block catheters under ultrasound guidance...*

- Echogenic tip catheter and EchoBright needle
- Unique pattern on the EchoLong catheter tip produces a much brighter image than other products



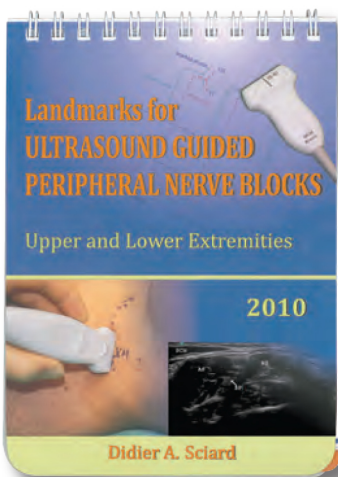


## Model Selection

Product	Style	Size		Attachment		Catheter	
Reorder Number	Block Bevel = B Tuohy = T Echogenic = E	Gauge (OD)	Length (mm/inch)	Integrated Stimulating Cable	Infusion Set	Stimulating=S Non-Stimulating = N Echogenic = E	Catheter Connector Tuohy Borst=TB Stingray=SR
<b>ProLong</b>							
PL19050GC	B	19	50/2	X	X	N	TB
PL19100GC	B	19	100/4	X	X	N	TB
PL19150GC	B	19	150/6	X	X	N	TB
PL18050TGC	T	18	50/2	X	X	N	TB
PL18100TGC	T	18	100/4	X	X	N	TB
PL18150TGC	T	18	150/6	X	X	N	TB
<b>ContiStim</b>							
CS19050GC	B	19	50/2	X	X	S	SR
CS19100GC	B	19	100/4	X	X	S	SR
CS19150GC	B	19	150/6	X	X	S	SR
CS18050TGC	T	18	50/2	X	X	S	SR
CS18100TGC	T	18	100/4	X	X	S	SR
CS18150TGC	T	18	150/6	X	X	S	SR
<b>EchoBright</b>							
EL18050G	E	18	50/2		X	N	TB
EL18100G	E	18	100/4		X	N	TB
EL18150G	E	18	150/6		X	N	TB
EL18050GC	E	18	50/2	X	X	N	TB
EL18100GC	E	18	100/4	X	X	N	TB
EL18150GC	E	18	150/6	X	X	N	TB
EE18050G	E	18	50/2		X	E	TB
EE18100G	E	18	100/4		X	E	TB
EE18150G	E	18	150/6		X	E	TB
EE18050GC	E	18	50/2	X	X	E	TB
EE18100GC	E	18	100/4	X	X	E	TB
EE18150GC	E	18	150/6	X	X	E	TB
<b>StimPro ProLong</b>							
SP19050GC	B	19	50/2	X	X	N	TB
SP19100GC	B	19	100/4	X	X	N	TB
SP19150GC	B	19	150/6	X	X	N	TB
<b>StimPro ContiStim</b>							
SC19050GC	B	19	50/2	X	X	S	SR
SC19100GC	B	19	100/4	X	X	S	SR
SC19150GC	B	19	150/6	X	X	S	SR
SC18050TGC	T	18	50/2	X	X	S	TB
SC18100TGC	T	18	100/4	X	X	S	TB
SC18150TGC	T	18	150/6	X	X	S	TB
<b>Catheter Set without Needle</b>							
ET-21.536		21.5	36"			E	TB
OT-2136		21	36"			N	TB

# Life-Tech offers an expanding line of Peripheral Nerve Block Educational Products

## Landmarks Book



- Lavishly illustrated
- Provides detailed information on landmarks, anatomical considerations and ultrasonographic techniques
- Includes 19 different nerve blocks.

Part # AB2

# **IMA**

**Independent Medical Associates**

Contact:  
888.548.4462  
info@I-MA.com  
www.I-MA.com

for additional information on  
these and other Peripheral  
Nerve Block products.

ML0129 Rev B

# Interactive Simulators

## MiniSim Interactive Ultrasound Guidance Simulators

### Realistic

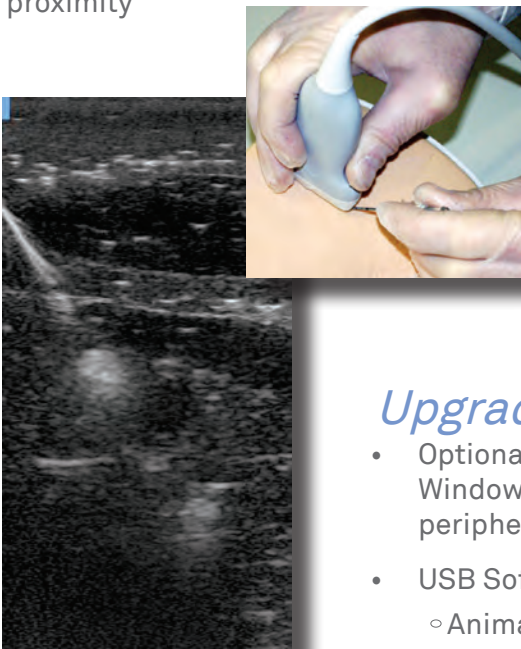
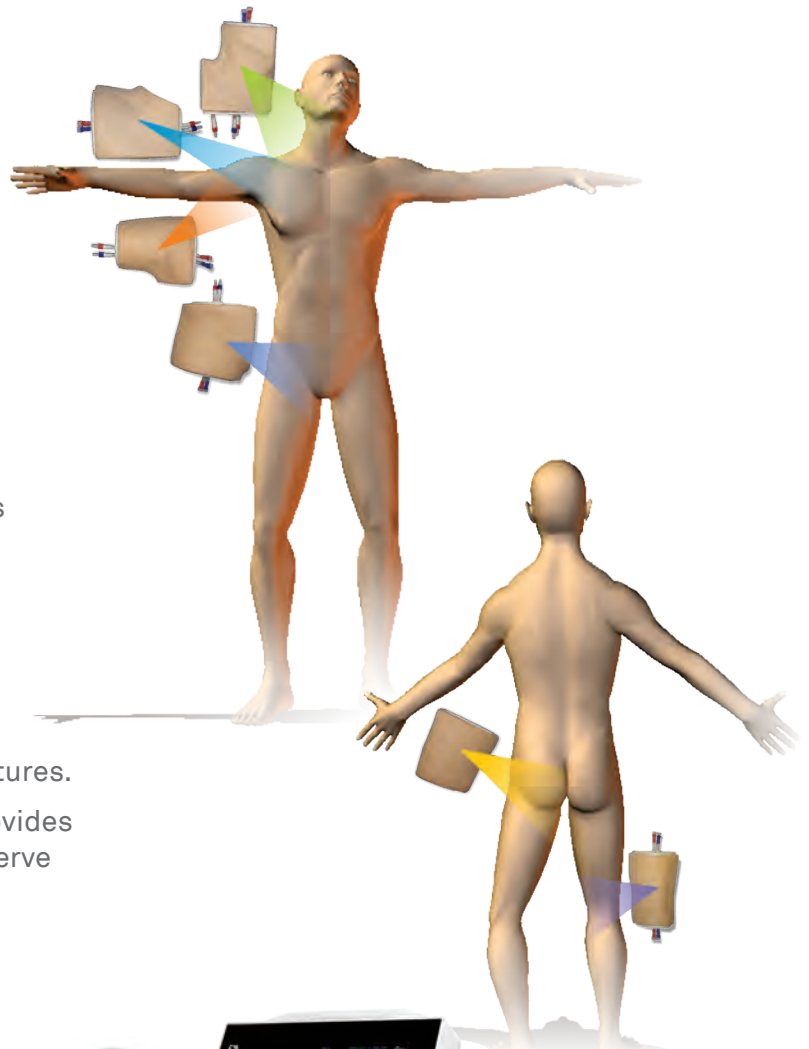
The block-specific MiniSims:

- Contain all of the relevant surface landmarks, palpable subcutaneous anatomical structures and internal reference points associated with the blocks they represent
- Exhibit realistic echogenic properties for the embedded muscle, vascular, bony and nervous structures

The MiniSim generic trainer provides realistic ultrasound images of all internal anatomical structures associated with peripheral nerve blocks

### Compact & Affordable

- Small desktop platform is ideal for workshops
- Very economical
- Capable of withstanding multiple needle punctures.
- Battery operated Nerve Proximity Indicator provides audible and visual indication of needle tip to nerve proximity



### Upgradeable

- Optional USB interface available for each unit provides connection to a Windows® based computer and use of proprietary peripheral nerve block training software
- USB Software includes:
  - Animated twitches that emulate stimulation of block specific nerves
  - Anatomical modeling





## MiniSim Specifications

MODEL	SURFACE LANDMARKS	INTERNAL LANDMARKS
<b>MS-TRN</b> MiniSim Trainer	Universal ultrasound phantom (shown above)	Produces typical ultrasound images of veins, arteries, muscle, bone, and hyper- and hypo-echoic nerves
<b>UPPER EXTREMITY SERIES</b>		
MODEL	SURFACE LANDMARKS	INTERNAL LANDMARKS
<b>MS-INT</b> Interscalene / Supraclavicular	<ul style="list-style-type: none"> <li>Sternocleidomastoid muscle</li> <li>Cricoid Cartilage</li> <li>Supraclavicular fossa</li> </ul>	<ul style="list-style-type: none"> <li>First rib</li> <li>Clavicle</li> <li>Internal jugular vein</li> <li>Carotid and subclavian arteries</li> <li>Anterior and middle scalene muscles</li> <li>Brachial plexus roots / trunks</li> </ul>
<b>MS-INF</b> Infraclavicular	<ul style="list-style-type: none"> <li>Infraclavicular fossa</li> <li>Pectoralis major</li> </ul>	<ul style="list-style-type: none"> <li>Clavicle</li> <li>Coracoid process</li> <li>Pectoralis major and minor</li> <li>Axillary artery and vein</li> <li>Brachial plexus divisions/cords</li> </ul>
<b>MS-AX</b>	<ul style="list-style-type: none"> <li>Deltoid, choracobrachialis and biceps muscles</li> <li>Axilla</li> </ul>	<ul style="list-style-type: none"> <li>Biceps, triceps and coracobrachialis muscles</li> <li>Axillary artery and vein</li> <li>Brachial plexus branches</li> </ul>
<b>LOWER EXTREMITY SERIES</b>		
MODEL	SURFACE LANDMARKS	INTERNAL LANDMARKS
<b>MS-FEM</b> Femoral	<ul style="list-style-type: none"> <li>Inguinal crease</li> </ul>	<ul style="list-style-type: none"> <li>Anterior superior iliac spine</li> <li>Pubic tubercle</li> <li>Pubis</li> <li>Femoral nerve, artery and vein</li> <li>Iliopsoas and pectineus muscles</li> </ul>
<b>MS-SSG</b> Sciatic sub-gluteal	<ul style="list-style-type: none"> <li>Buttock</li> </ul>	<ul style="list-style-type: none"> <li>Greater trochanter</li> <li>Ischial tuberosity</li> <li>Gluteus maximus</li> <li>Sciatic nerve</li> </ul>
<b>MS-POP</b> Popliteal	<ul style="list-style-type: none"> <li>Popliteal crease</li> <li>Biceps femoris, semimembranosus and semitendinosus muscles</li> </ul>	<ul style="list-style-type: none"> <li>Tibial, common peroneal and sciatic nerves</li> <li>Biceps femoris and semitendinosus muscles</li> <li>Popliteal artery and vein</li> </ul>

## MiniSim Package Options

Product Name	Order #	MS-INT	MS-INF	MS-AX	MS-FEM	MS-SSG	MS-POP	MS-TRN	NPI-1	NPI-1U	MiniSim USB Software	MC7/41 Custom Travel Case
<b>Block-in-a-Box</b>												
Interscalene/supraclavicular	BIB-INT	X							X			
Infraclavicular	BIB-INF		X						X			
Axillary	BIB-AX			X					X			
Femoral	BIB-FEM				X				X			
Sciatic Subgluteal	BIB-SSG					X			X			
Popliteal	BIB-POP						X		X			
<b>Training Systems</b>												
Interscalene/supraclavicular	TS-INT	X						X	X			
Infraclavicular	TS-INF		X					X	X			
Axillary	TS-AX			X				X	X			
Femoral	TS-FEM				X			X	X			
Sciatic Subgluteal	TS-SSG					X		X	X			
Popliteal	TS-POP						X	X	X			
<b>Complete Upper Kit</b>	<b>MS-UE</b>	X	X	X				X	x3	X	X	X
<b>Complete Lower Kit</b>	<b>MS-LE</b>				X	X	X	X	x3	X	X	X
<b>MiniSim Trainer</b>	<b>MS-TRN</b>							X				
<b>USB Kit</b>	<b>MS-USB</b>									X	X	

